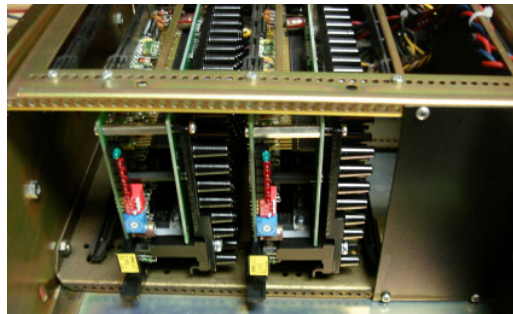


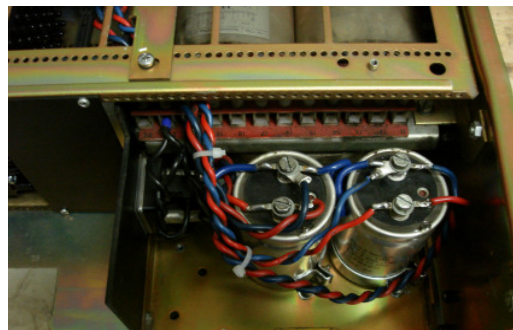
## BFL-AKM500 DRIVE CONVERSION FOR KIM500 UNITS

“... greatly reduces time and possible retrofit error when upgrading KIM500 5-phase stepping motor multi axis devices to new drive cards BFL-450/BFL-550 \* ...”

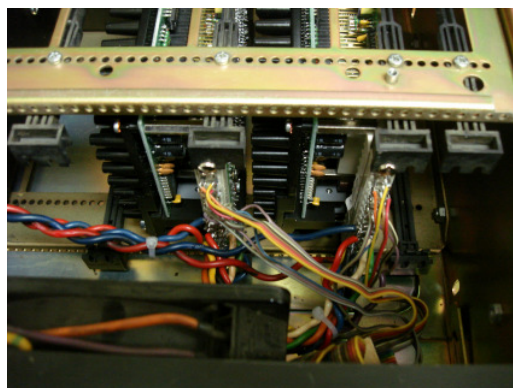
- Benefits/advantages/cost savings:
  - Existing 5-phase stepping motors can still be used
  - No changes of external motor and signal wiring necessary
  - Full mechanical compatibility because all modifications are only made device internally
- Conversion of all 2- or 3-axis devices with D548.02 (opto isolator card) or D597 (RS422 interface cards) and adaption of the new drives to either 5V or 24V signal input voltage
- Removal and disposal of the D500 drive cards, power supply energy feed back board and all other optional boards that are no longer required
- Rewiring of the power supply module and other effected internal signal interfaces
- Relay dry contact output READY remains unchanged
- NOTE: All signal inputs are now only “high active” (not invertable)
- NOTE: The fourth input (previously configurable thru 548.02 or D597 card) is now fix set to function ZERO PHASE CURRENT



Converted KIM500 device with replaced D500 drive cards (e.g with BFL-450/BFL-550)



Rewired power module without energy feed back board



Modified signal wiring

\* KIM500 device not included

### BLACK FOREST LINK..

..combines industrial high performance stepping motor drive and control systems with pre-engineered functionality for a variety of applications.

..systems offer user friendly solutions for a variety of industrial applications demanding repeatable accuracy in

- Marking
- Labeling
- Scanning
- Inkjet printing
- Sorting
- Packing
- Pick & Place
- Palletizing

..systems serve a variety of industries:

- Packaging
- Printing
- Labeling
- Automotive
- Food
- Medical
- Pharmaceutical
- ...

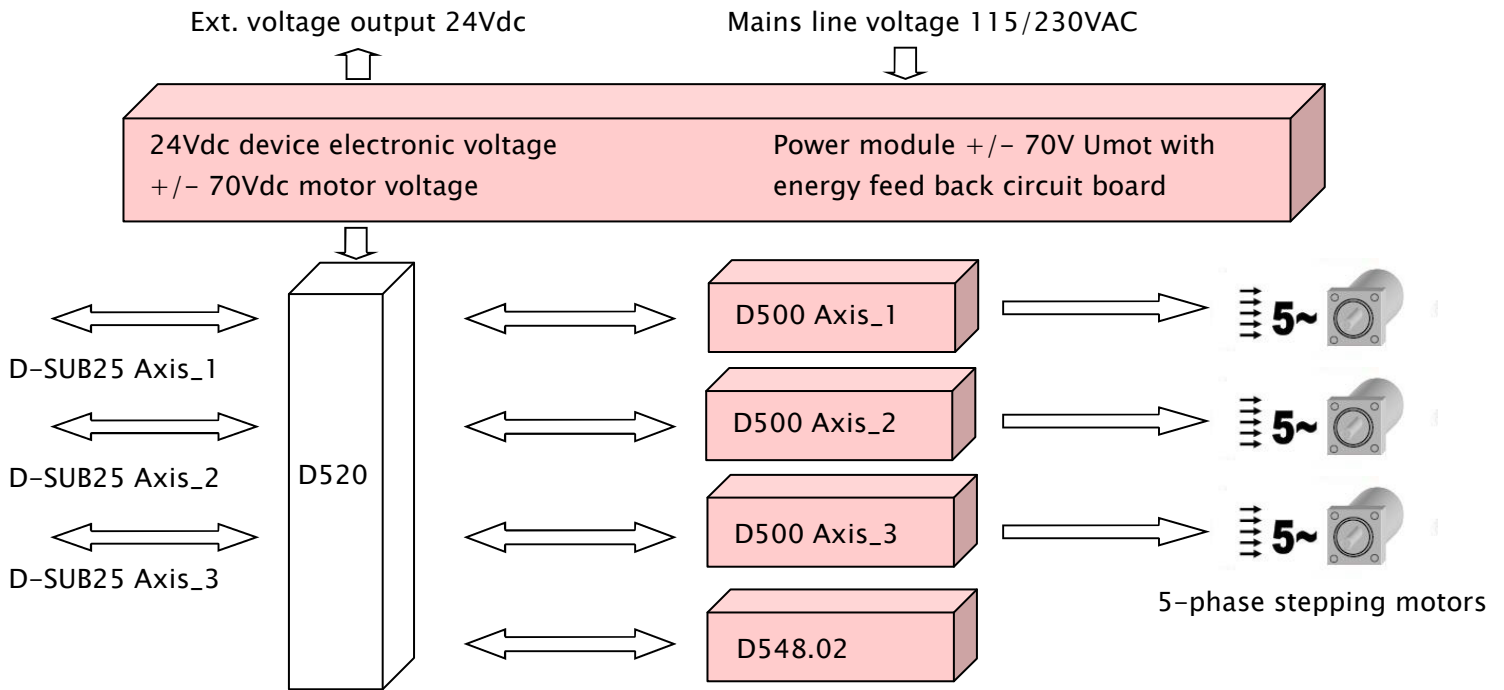
Please visit us at..  
[www.blackfoli.com](http://www.blackfoli.com)

BFL-AKM500-US0.2

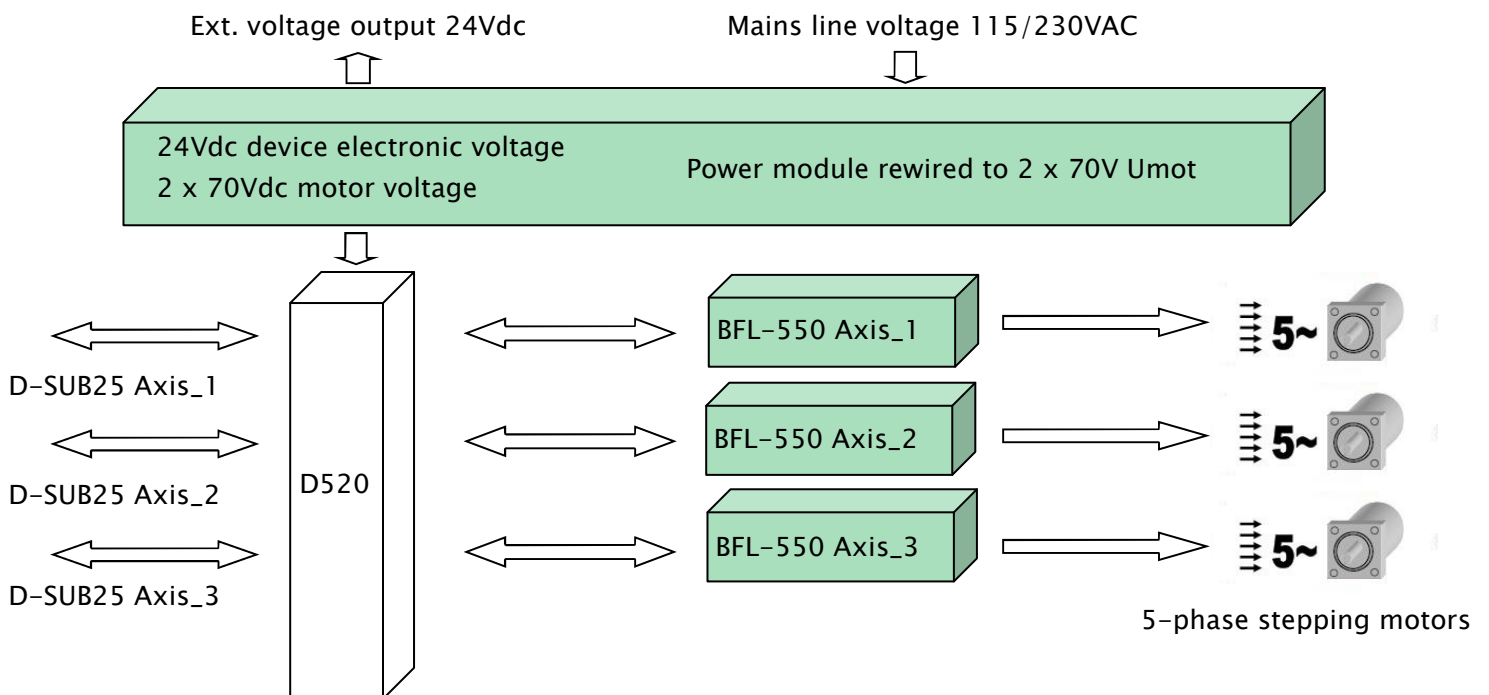


*“Over 30 years of application experience in motion control solutions for marking and labeling”*

## Application example: KIM523.0202 device with D500 drive cards



## Same device after conversion to new BFL-550 drive cards



BFL-AKM500-US0.2